

500 F

Fire automatic sliding door



GERMAN
INNOVATION
AWARD 21
WINNER



BIGSEE
PRODUCT DESIGN
AWARD 2021
WINNER

Use

- automatic sliding opening/closing
- force closing in emergencies

Fire barrier

In case of an emergency or power failure, the door **FORCIBLY CLOSES** and **prevents the spread of fire**. Escape is not possible.



Fire switch

The door mode operation is indicated on the Fire switch display.



Automatic sliding operation

Fire barrier - no escape

17 cm
drive height



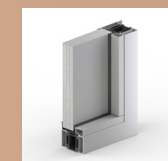
Dimensions

1 leaf: clear opening width 800 - 1400 mm
2 leaves: clear opening width 1200 - 2500 mm
Clear opening height 1900 - 2500 mm
Side & top screens possible

Leaf



Glass



Panel

Fire resistance

Highest levels of fire protection
(Integrity and Insulation)



doorson

patent
European Registered

registered design
EUIPO 805886

product certificate
Slovenia

EU
made in Europe

standards
EN 16034, EN 16361, EN 16005



Remote control with
My Door App

