

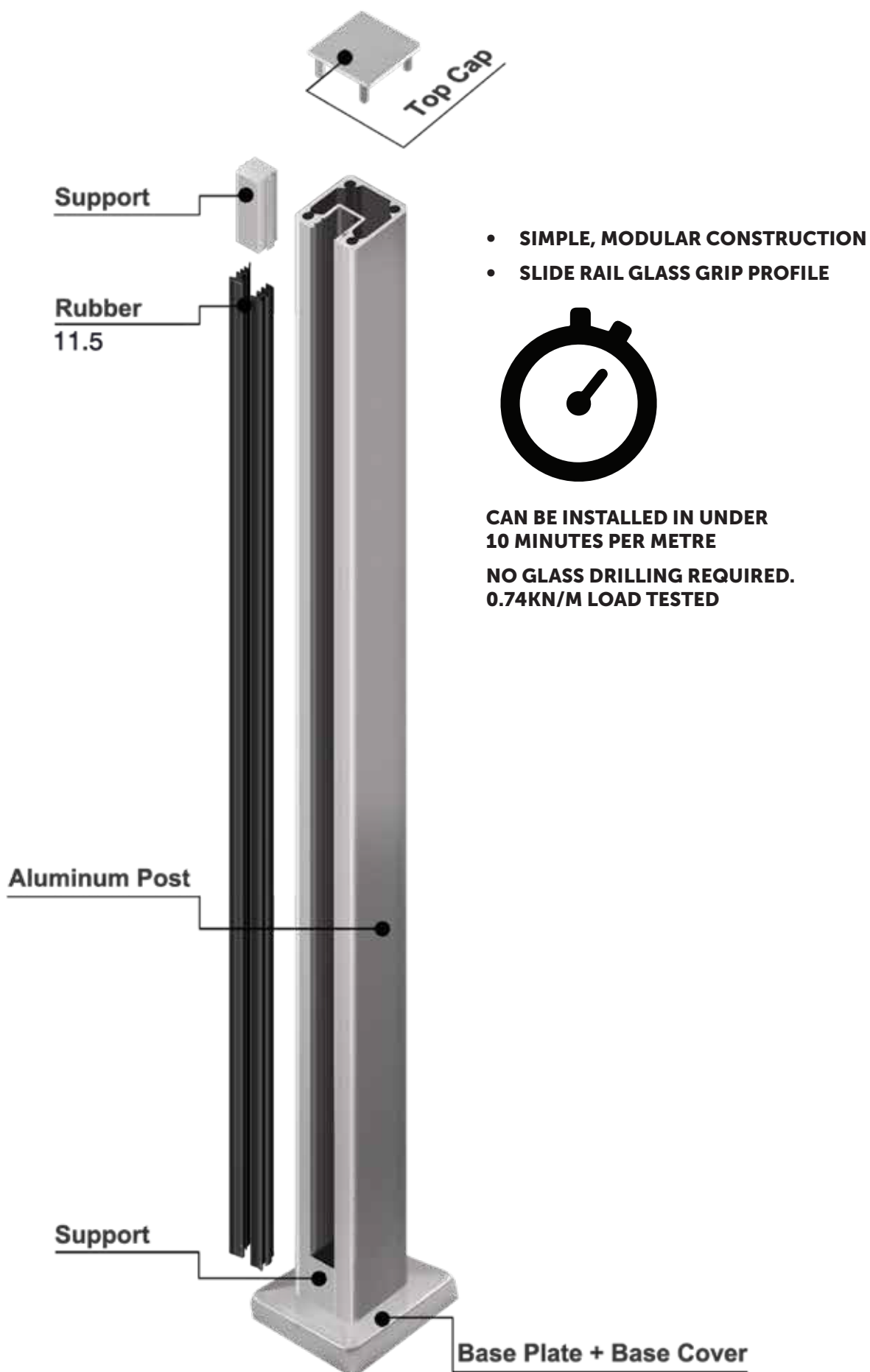
A photograph of a modern balcony with a glass balustrade. The balcony is made of light-colored wooden planks and is situated on a hillside. The balustrade consists of black vertical posts and clear glass panels. In the background, there is a dense forest of green trees and ferns. The sky is visible through the trees.

# **EAZYSIDE**

## **SLOTTED ALUMINIUM BALUSTRADE**

**BM**ARCHITECTURAL





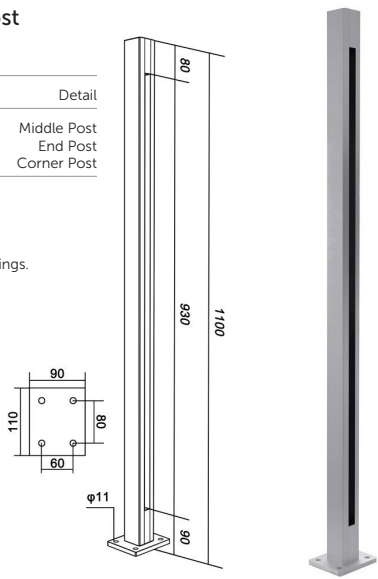
EasySlide Base Fix Post

90090

Article	Detail
90090.115.SA	Middle Post
90093.115.SA	End Post
90092.115.SA	Corner Post

To suit glass 11.5mm.  
Satin Anodised finish as standard.  
Other finishes on request.

Supplied with glass support bushings.  
Gasket for 11.5mm glass.  
Top caps.  
Baseplate cover.



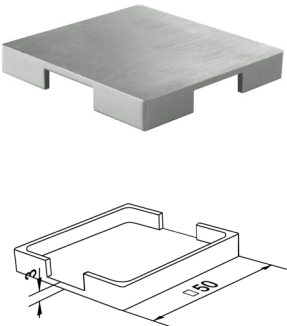
U Rubber Gasket

Description	Glass mm
Supplied with post kit	11.5



Post Top Cap

Description
Supplied with post kit



Powder Coat Finishing

90090

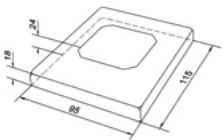
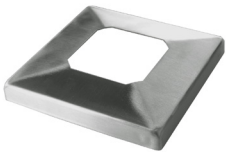
Article	Detail
90090.115	Middle Post
90093.115	End Post
90092.115	Corner Post

RAL Code	Colours
9005	Black
7016	Anthracite
9001	White

For specific colour finishes, add RAL Code  
suffix to product code.

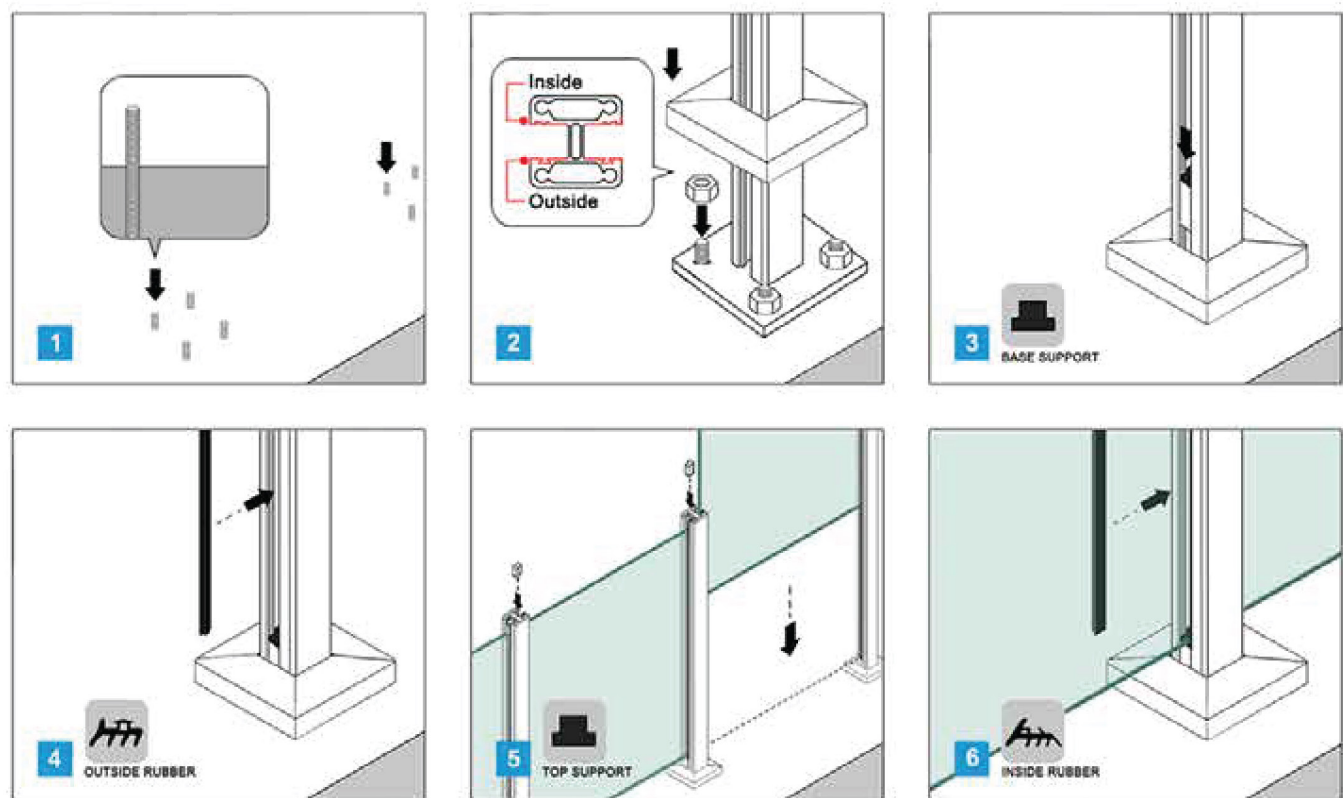
Baseplate Cover

Description
Supplied with post kit



# EAZYSIDE INSTALLATION GUIDE

## Base Fix Installation

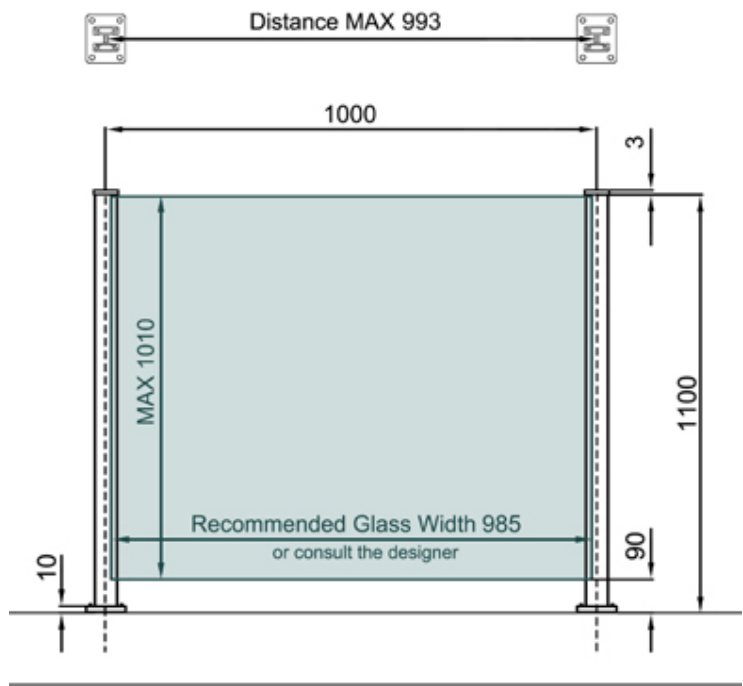


Tip: The top & base supports are universal, and the side with rubber is always next to glass - when placed as a base support, the rubber is upward, while as a top support, the rubber is facing down.

## GLASS LOADING CHART

Glass	11.5
kN/M	
0.74	•
Bolted down into concrete or steel	

## RECOMMENDED DIMENSIONS



# BMARCHITECTURAL

## SPECIALISTS IN ARCHITECTURAL SYSTEMS

From homes to workplaces and beyond, we help create inspiring and safe spaces where people thrive.

Our expertise areas include:

- Residential, commercial and anti-terror **Glass Balustrade**
- Canopies, partitions and structural walls of **Frameless Glass**
- Fire-rated, security, slimline and thermally-insulated **Steel Glazing**
- **Class A Fire-Rated Balcony Systems** for safer high-rise living
- Composite and recycled plastic products for transforming **Outdoor Spaces**

Our architectural systems enhance the natural light, feeling of space, views, safety and visual appeal of a property. They also enable design professionals and building owners to meet fall protection, thermal, fire and security regulations with ease.

Contact us to discuss your requirements. We supply new-build and renovation projects, large and small, throughout the UK and Ireland.

**T:** 0114 254 3226

**E:** [sales@bmarchitectural.com](mailto:sales@bmarchitectural.com)

**W:** [www.bmarchitectural.com](http://www.bmarchitectural.com)

A BARCLAY & MATHIESON LTD COMPANY

**BMGROUP**

May 2025

**BMSTEEL**



**ANGUS F GUNN LTD**



**BM DISTRIBUTION**