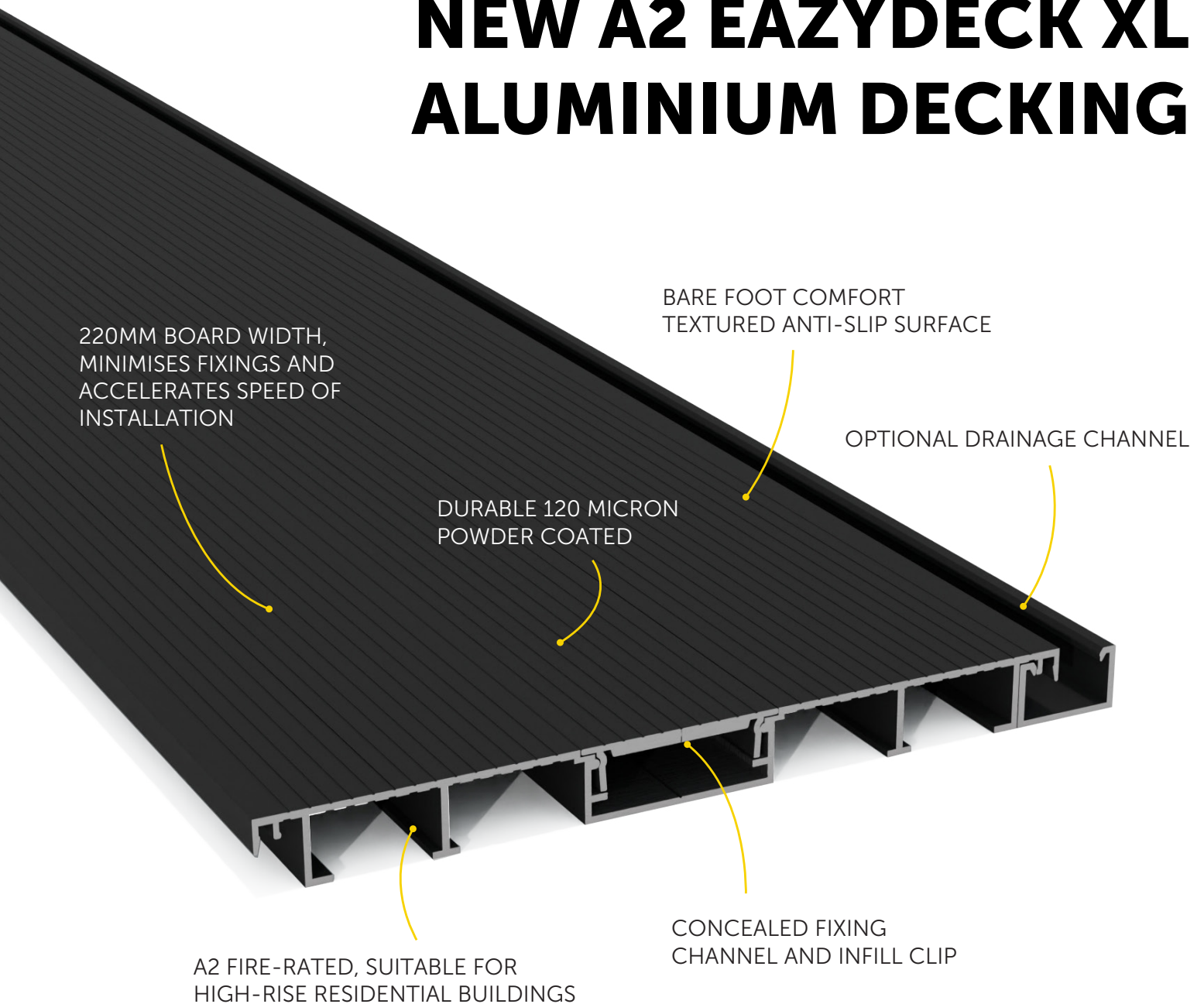


NEW A2 EAZYDECK XL ALUMINIUM DECKING



STYLISH | DURABLE | FIRE-RATED | ANTI-SLIP

The new EazyDeck XL Board with its A2fl-s1 reaction-to-fire classification is the perfect decking for any project, including balconies on high-rise residential buildings.

Available in any RAL colour to suit a range of aesthetics and powder-coated to 120 microns for an improved, friction-tested textured surface, EazyDeck is hard-wearing and anti-slip in both wet and dry conditions.

With an impressive board profile measuring 220mm wide by 20mm deep, this is a quick-to-install, high performing aluminium decking that achieves spans up to 1100mm between fixing points with minimal deflection.

Drainage is controlled through optional channels fitted between the boards. Aluminium joists and steel joist cradle pedestals complete the range of accessories.

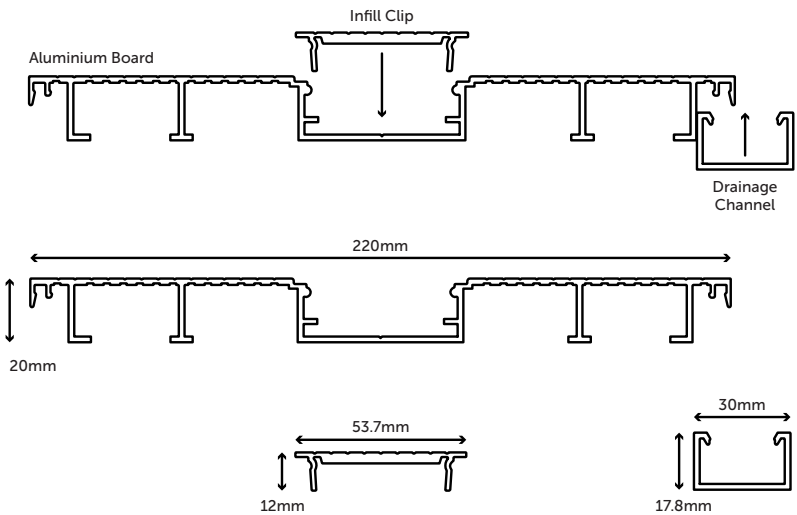
A2 EazyDeck XL

3600mm Length

Article	Colour
2202036-BL	Black RAL 9005
2202036-AG	Anthracite RAL 7016
2202036-SB	Sand RAL 1019

6000mm Length

Article	Colour
2202060-BL	Black RAL 9005
2202060-AG	Anthracite RAL 7016
2202060-SB	Sand RAL 1019



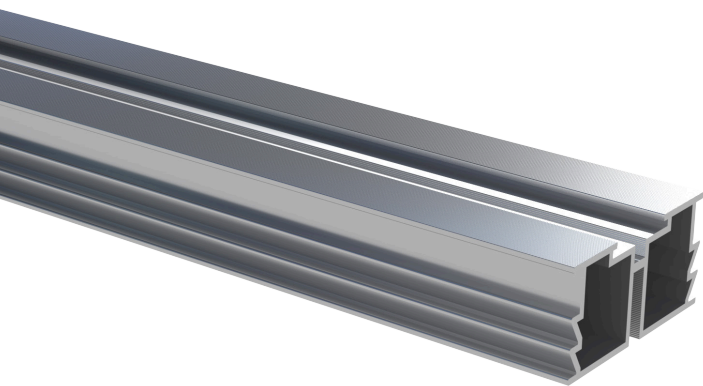
Technical Specifications

Characteristics	Units
Fire-Rated	A2fl-s1 to EN13501
Compliance	Commercial Tread Specification
Material	6063 T6 Aluminium
Colour	Black (RAL 9005); Sand (RAL 1019); Anthracite Grey (RAL 7016)
Finish	Durable Textured 120µm
Warranty	PPC 10 Years
Service Life	30 years
Slip Resistance	70 (Dry) 48 (Wet)
2kN Load Span at <5mm Deflection	Up to 1100mm
Lengths (Typical)	3.6m & 6m

Dimensions

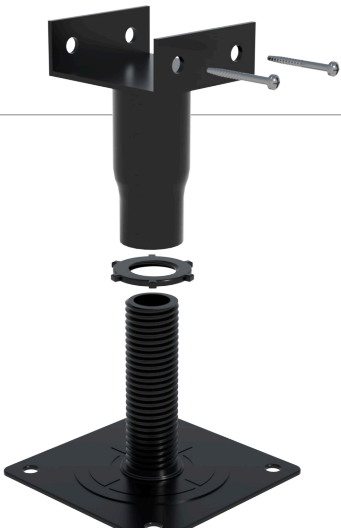
Product	Dimensions	Length
Individual Board	220 x 20mm	3.6m & 6m
Infill Clip	53.7 x 12mm	3.6m & 6m
Optional Connecting Drainage Channel	30 x 17.8mm	3.6m & 6m

Substructure Components



Aluminium Joists

Support Joist to provide optimum strength and stability to the deck.



Steel Joist Cradle Pedestals

Steel Pedestal that accepts the aluminium joists and accommodates height adjustments.